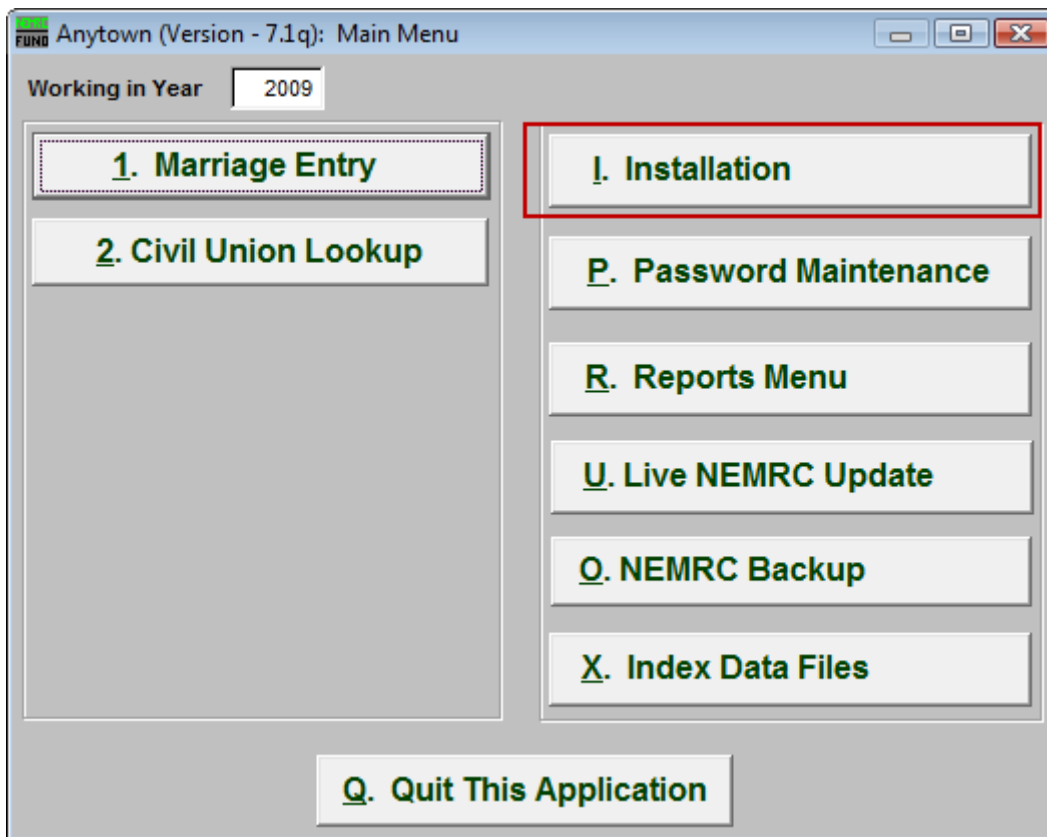


Marriage Administration

I. Installation

Table of Contents

Installation.....	2
The “General” tab	2
The “Function Keys” tab	4
The “Color Codes” tab.....	5
The “Officials” tab.....	6



Click on “I. Installation” from the Main Menu and the following window will appear:

Marriage Administration

Installation

The “General” tab

The screenshot shows a window titled 'Installation Options' with a 'FUNO' logo. It has four tabs: 'General' (selected), 'Function Keys', 'Color Codes', and 'Officials'. The 'General' tab contains several settings:

- License Form:** A dropdown menu showing '00' with a red '1' to its left.
- License Lifetime:** A text box containing '60' with a red '2' to its left.
- Civil Union Form:** A dropdown menu showing '00' with a red '3' to its left.
- Civil Union Lifetime:** A text box containing '60' with a red '4' to its left.
- Top Print Offset 1/10000 of Inch:** A text box containing '0' with a red '7' to its left.
- Left Print Offset 1/10000 of Inch:** An empty text box with a red '7' to its left.
- Default Town Clerk:** An empty text box with a red '5' to its left.
- Use Color Index Cards:** A checkbox with 'Y' selected and a red '6' to its left.

At the bottom right, there are two buttons: '9 OK' and '10 Cancel'.

- 1. License Form:** Click on the box and select the Form number from the selection provided.
- 2. License Lifetime:** Enter the number of days that each license is good for. The default is 60 days. If the ceremony is not held within the number of days entered, then the couple will have to get a new license.
- 3. Civil Union Form:** Click on the box and select the Form number from the selection provided.
- 4. Civil Union Lifetime:** Enter the number of days that each license is good for. The default is 60 days. If the ceremony is not held within the number of days entered, then the couple will have to get a new license.
- 5. Default Town Clerk:** Enter the Town Clerk the form should Default to.
- 6. Use Color Index Cards:** Enter in “Y” for Yes if Color Index Cards will be used, or “N” for No if Color Index Cards will not be used.

Marriage Administration

- 7. Top/Left Print Offset 1/10000 of Inch:** A positive number will make the Marriage form print down(Top) OR right(Left) a bit, and a negative number will move the printing up(Top) OR left(Left) a bit. Remember that “1” is equal to “1/10000” of an inch.
- 8. Top/Left Print Offset 1/10000 of Inch:** A positive number will make the Civil Union form print down(Top) OR right(Left) a bit, and a negative number will move the printing up(Top) OR left(Left) a bit. Remember that “1” is equal to “1/10000” of an inch.
- 9. OK:** Click “OK” to save changes and return to the previous screen.
- 10. Cancel:** Click “Cancel” to cancel and return to the previous screen.

Marriage Administration

The “Function Keys” tab

The screenshot shows a Windows-style dialog box titled "Installation Options" with a blue title bar. It has four tabs: "General", "Function Keys" (which is selected and highlighted with a dotted border), "Color Codes", and "Officials". The "Function Keys" tab contains a list of function keys from F5 to F12, each with a corresponding text input field to its right. A red number "1" is placed to the left of the F5 key. At the bottom of the dialog, there are two buttons: "2 OK" and "3 Cancel", both with red numbers next to them. The dialog box has standard Windows window controls (minimize, maximize, close) in the top right corner.

Function Key	Input Field
F5	
F6	
F7	
F8	
F9	
F10	
F11	
F12	

1. These are used to set shortcuts for common phrases for easy use, and to save you from having to retype something multiple times.

When a value is assigned from the point of the cursor placement the function key with the assignment can be used to populate fields. Each of these fields are linked to the “Function key” that is to its left. This means that when you hit the “F_” key on the keyboard, the text you entered for that “Function key” will appear.

2. **OK:** Click “OK” to save changes and return to the previous screen.
3. **Cancel:** Click “Cancel” to cancel and return to the previous screen.

Marriage Administration

The “Color Codes” tab

If you enter a “Y” in the “Use Color Index Codes” field in the “General” tab, then the “Color Codes” tab will become available.

Code	Description	Color	
A	Party A	WHI	
B	Party B	YEL	
G	Groom	BLU	
R	Bride	ORG	

OK Cancel

- 1. Code:** Enter a letter code of the Description.
- 2. Description:** Enter the Description of the code.
- 3. Color:** Valid colors are: WHI, YEL, ORG, BLU, PNK, GRE, CRM, PUR.
- 4. OK:** Click “OK” to save changes and return to the previous screen.
- 5. Cancel:** Click “Cancel” to cancel and return to the previous screen.

Marriage Administration

The “Officials” tab

Name	Title	Address	City	State	Zip
JOE	TEST	ANY	ANYTOWN	VT	

2 Delete

3 OK **4 Cancel**

- 1. Selector:** Enter the Name, Title, Address, City, State, and Zip code of commonly used Officials.
- 2. Delete:** Click “Delete” if you want to Delete an Official.
- 3. OK:** Click “OK” to save changes and return to the previous screen.
- 4. Cancel:** Click “Cancel” to cancel and return to the previous screen.